

For the attention of Headteachers and Integris Administratorsin this edition.....Insights meet-up - all welcomeBrexit and Integris...Latest national statistics....Tips from the helpdesk.....New Primary Assessment Gateway...

Autumn 2019 (Oct 19) edition 15

Integris News

An online newsletter for Integris Users
keeping you up-to-date with latest news and features



Insights meet-up session for Bedfordshire schools

Come and join RM and CBICT at a free **Insights** meet-up session on the morning of **Friday 6th December 2019** at the Rufus Centre, Flitwick.

This session, hosted by RM, is an opportunity to hear how their latest developments are progressing and learn more about the Unify single sign-on product and developments in the free ParentHub module. Its also your chance to feedback your views and wishes directly to RM representatives.

To register, click [here](#) to book your place via RM's website.

We look forward to seeing you on 6th December!

Administrators.....Note some minor changes to Integris.....do not adjust your screens.....

The **Apply Changes** button on the **Speed Edit** screen will shift along closer to the *New Value* field and the Cancel button has been changed to **Exit**.

Your users will also see a much clearer message relating to when User accounts are due to expire or have expired encouraging users to see the Integris Administrator to extend the expiry date.

Brexit and Integris

Following the issue of **Lord Agnew's letter** to schools about preparedness for leaving the EU relating to **data protection** dated 17th September 2019 and subsequent advice issued by the DfE, we have received some questions from schools about whether RM hold

For the attention of Primary schools!

The new **Primary Assessment Gateway** has replaced **NCA tools** from the 2019/20 academic year. You can continue to access 2019 KS2 test results in NCA tools until 11:59pm on Friday 29 November. *Please remember to download your KS2 TA and Test results via a CTF file from NCA Tools website if you haven't done so already - these results can then be imported directly into Integris within seconds and used in Intelligence and other reporting!*

Note that you will not be able to use your NCA tools sign-in details for the Primary Assessment Gateway.

NCA tools users who accessed the site in the previous academic year have been set up with a new account in the Primary Assessment Gateway. This includes NCA tools superusers, and nominated users whose email address matched the domain of their organisation's superuser. You will receive an email to notify you that your account has been set up. This will contain a link to set a new password.

You can find our list of LiteBites on the Integris Home menu on our www.cbict.org.uk website. Have you looked at them lately?

Some tips from the helpdesk.....

How can I find out which of our pupils are drawing PP funding this year as well as previous years?

Providing your school has imported the PP Download file each year to update Integris with the latest list of pupils and their PP grant funding, you can search for pupils which match a specific funding year by performing this search either within Student Details/Speed Edit or within Student Find for any report:

Click **Find** (or +) to access the **Student Search** screen > click the **Additional Info** tab > in the **Pupil Premium Grant** box, select **Any Pupil Premium** (or if you want to search for EverFSM only, select **DPP-Deprivation Pupil Premium**) > **Applies** > **select the year** required e.g 2019/2020 or 2018/2019 etc.> click **Find** > then click **Select** and Yes to select all that match.

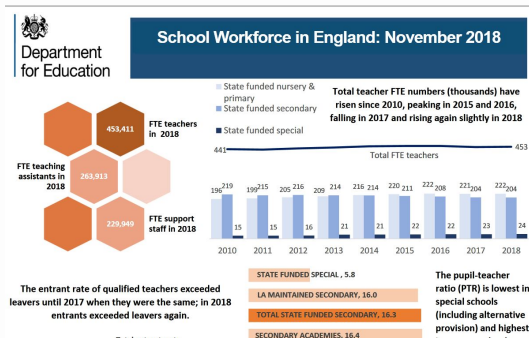
We have added a new **PP Funding - Pupil List** report into the **Reports> Ad-Hoc Reporting Simple > Local Authority Reports** folder which lists the pupils resulting from your search above and the grant type, grant start and end date. Have a go at running it! Remember you can add the year of funding into the report title on the criteria screen before you generate the report.

Latest Statistics releases.....

- **ATTENDANCE** *How do your attendance figures compare with national data?*

The combined Autumn 2018 and Spring 2019 national attendance figures have been published - you can get them from [HERE](#)

- **SWF data** As we approach this term's SWF Census, ever wondered what happens to all the data collected? The DfE have just published interesting statistics from last year's data collection in an Infographic and separate text documents - both are available from [HERE](#)



- **KS2 2019 Provisional results** - these can be found [HERE](#)

A message from CBICT.....

Dear colleagues,

We hope you have had a good start to the term. Our thoughts at the moment are directed towards the new features RM will be launching in the coming months that work with and enhance your Integris package and how we can best support you in incorporating these features into your everyday practice. We look forward to seeing many of you at the Insights meet-up session on 6th December.

With best wishes

Cathy & Neil

CBICT Ltd

Copyright © 2016-2019 CBICT Ltd, All rights reserved.

Our mailing address is:

admin@cbict.org.uk

Want to change how you receive these emails?

You can [update your preferences](#) or [unsubscribe from this list](#)

